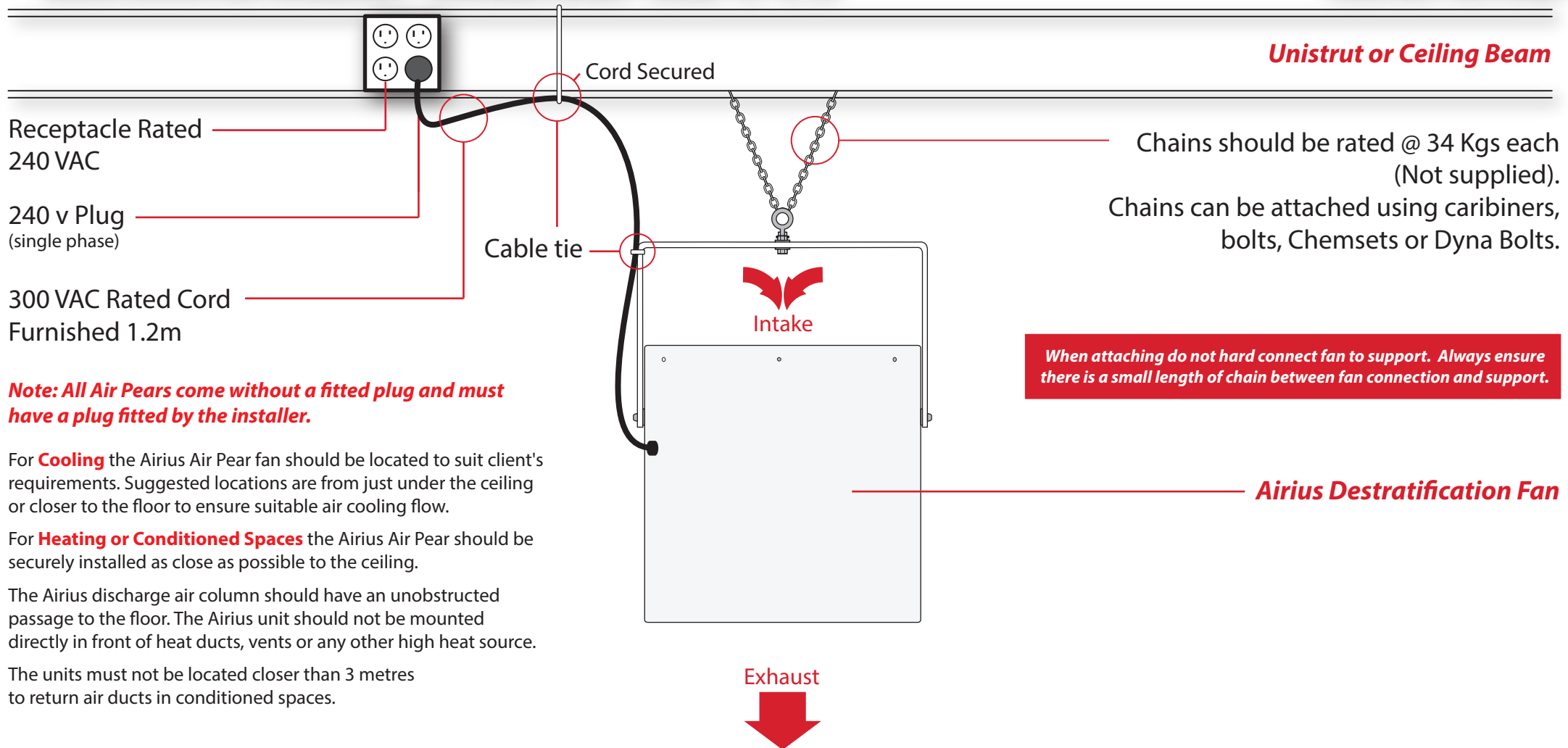


**AIRIUS MOUNTING GUIDELINES - DESIGNER SERIES - Model 10, 15, 25**

**PLUG NOT SUPPLIED**



**Note: All Air Pears come without a fitted plug and must have a plug fitted by the installer.**

For **Cooling** the Airius Air Pear fan should be located to suit client's requirements. Suggested locations are from just under the ceiling or closer to the floor to ensure suitable air cooling flow.

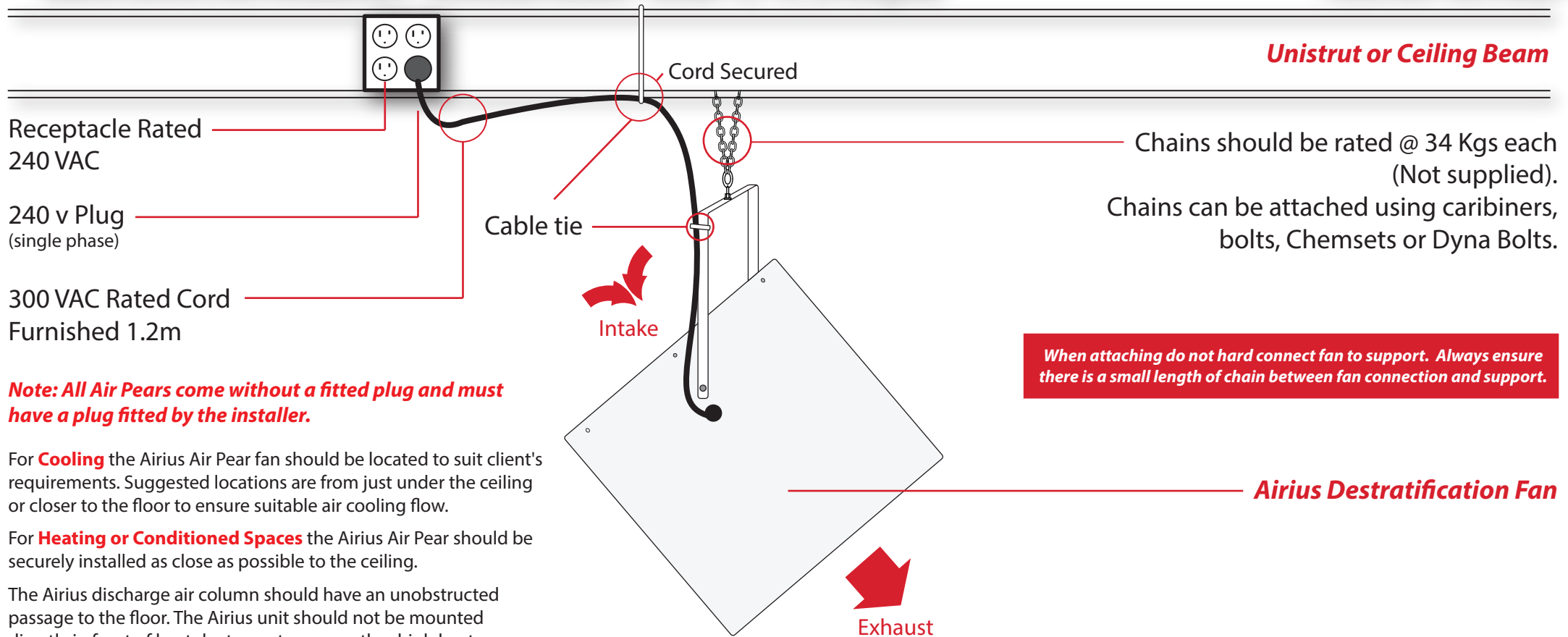
For **Heating or Conditioned Spaces** the Airius Air Pear should be securely installed as close as possible to the ceiling.

The Airius discharge air column should have an unobstructed passage to the floor. The Airius unit should not be mounted directly in front of heat ducts, vents or any other high heat source.

The units must not be located closer than 3 metres to return air ducts in conditioned spaces.

**AIRIUS MOUNTING GUIDELINES - DESIGNER SERIES - Model 10, 15, 25 (Angled)**

**PLUG NOT SUPPLIED**



**Note: All Air Pears come without a fitted plug and must have a plug fitted by the installer.**

For **Cooling** the Airius Air Pear fan should be located to suit client's requirements. Suggested locations are from just under the ceiling or closer to the floor to ensure suitable air cooling flow.

For **Heating or Conditioned Spaces** the Airius Air Pear should be securely installed as close as possible to the ceiling.

The Airius discharge air column should have an unobstructed passage to the floor. The Airius unit should not be mounted directly in front of heat ducts, vents or any other high heat source.

The units must not be located closer than 3 metres to return air ducts in conditioned spaces.