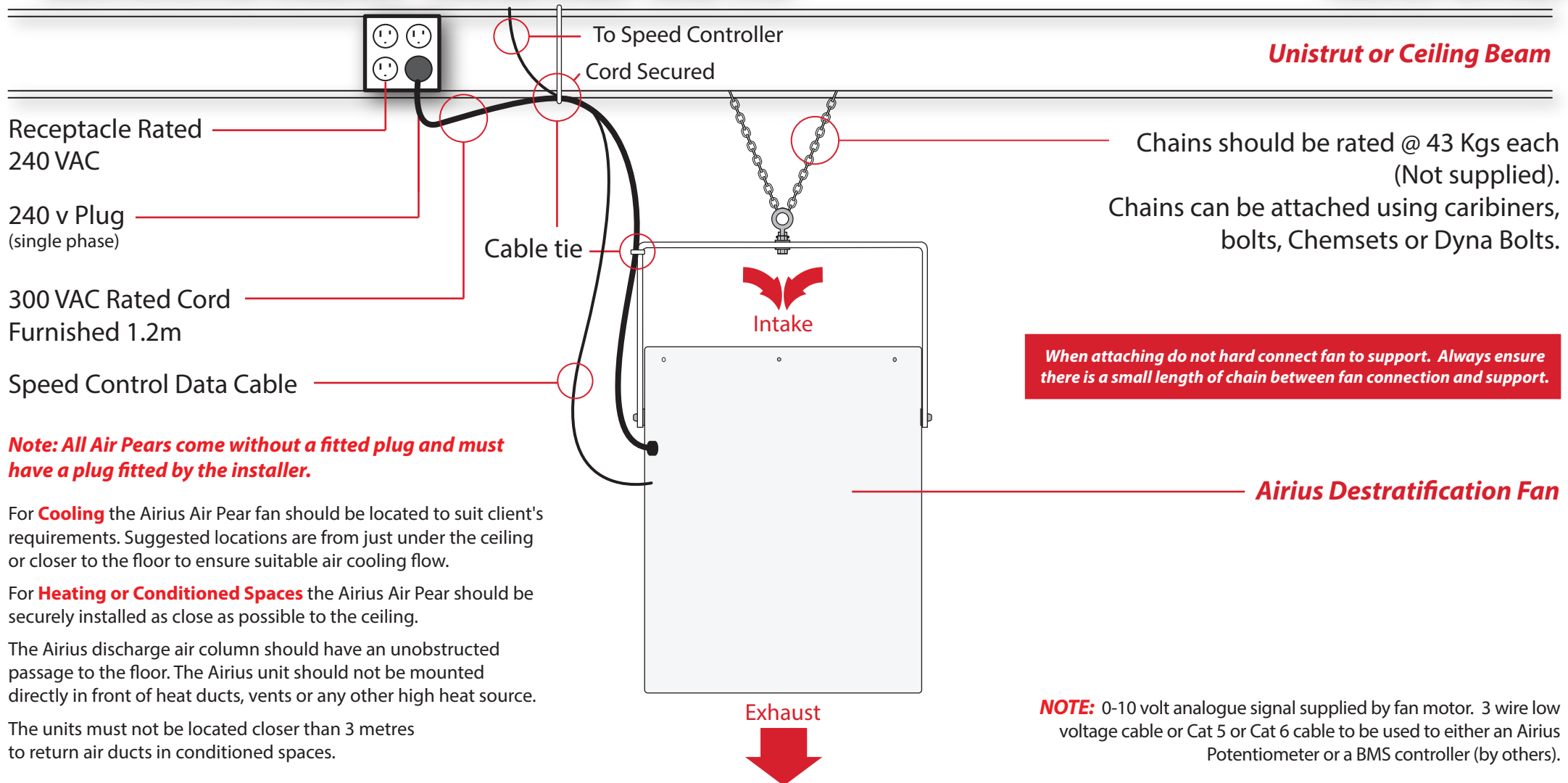


AIRIUS MOUNTING GUIDELINES - DESIGNER SERIES - Model 45/EC

PLUG NOT SUPPLIED



Note: All Air Pears come without a fitted plug and must have a plug fitted by the installer.

For **Cooling** the Airius Air Pear fan should be located to suit client's requirements. Suggested locations are from just under the ceiling or closer to the floor to ensure suitable air cooling flow.

For **Heating or Conditioned Spaces** the Airius Air Pear should be securely installed as close as possible to the ceiling.

The Airius discharge air column should have an unobstructed passage to the floor. The Airius unit should not be mounted directly in front of heat ducts, vents or any other high heat source.

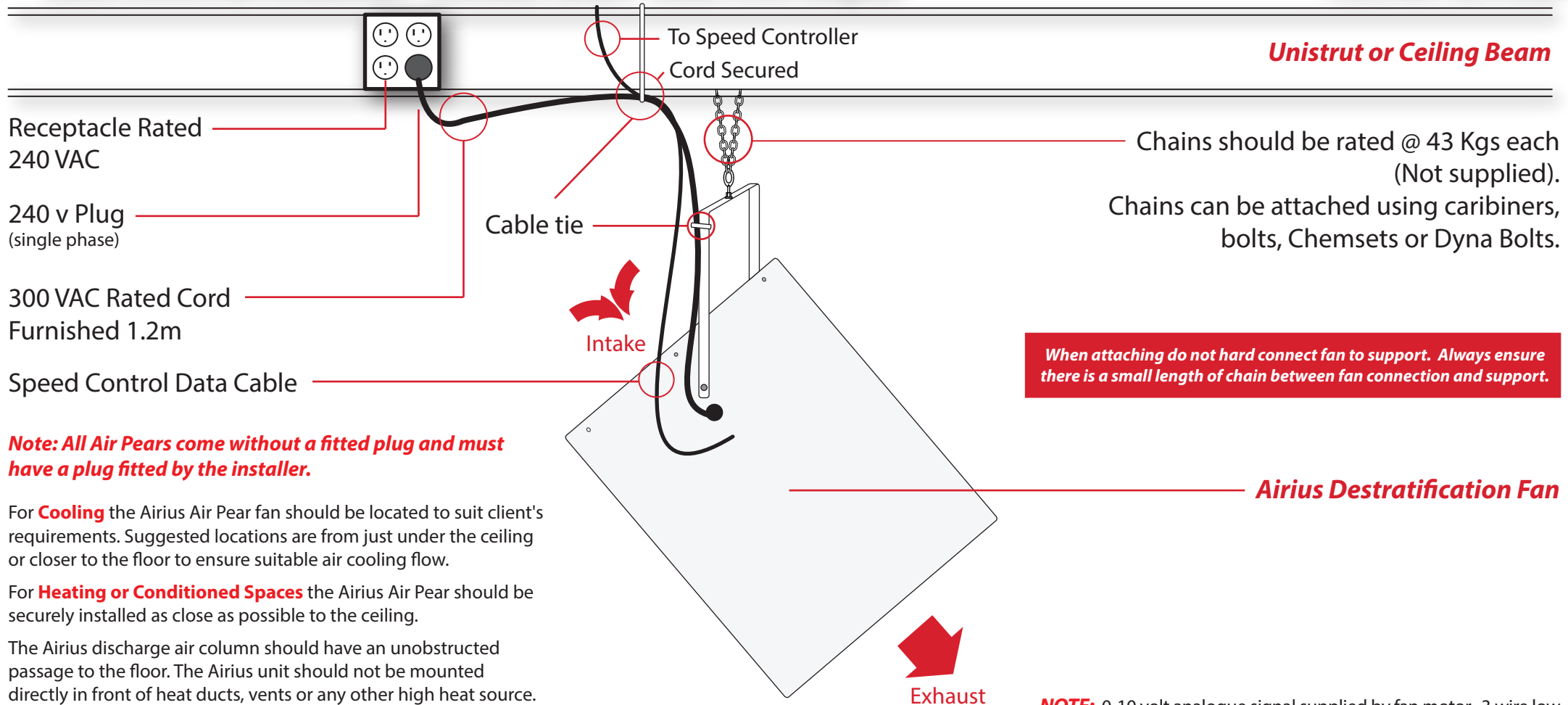
The units must not be located closer than 3 metres to return air ducts in conditioned spaces.

When attaching do not hard connect fan to support. Always ensure there is a small length of chain between fan connection and support.

NOTE: 0-10 volt analogue signal supplied by fan motor. 3 wire low voltage cable or Cat 5 or Cat 6 cable to be used to either an Airius Potentiometer or a BMS controller (by others).

AIRIUS MOUNTING GUIDELINES - DESIGNER SERIES - Model 45/EC (Angled)

PLUG NOT SUPPLIED



Note: All Air Pears come without a fitted plug and must have a plug fitted by the installer.

For **Cooling** the Airius Air Pear fan should be located to suit client's requirements. Suggested locations are from just under the ceiling or closer to the floor to ensure suitable air cooling flow.

For **Heating or Conditioned Spaces** the Airius Air Pear should be securely installed as close as possible to the ceiling.

The Airius discharge air column should have an unobstructed passage to the floor. The Airius unit should not be mounted directly in front of heat ducts, vents or any other high heat source.

The units must not be located closer than 3 metres to return air ducts in conditioned spaces.

NOTE: 0-10 volt analogue signal supplied by fan motor. 3 wire low voltage cable or Cat 5 or Cat 6 cable to be used to either an Airius Potentiometer or a BMS controller (by others).